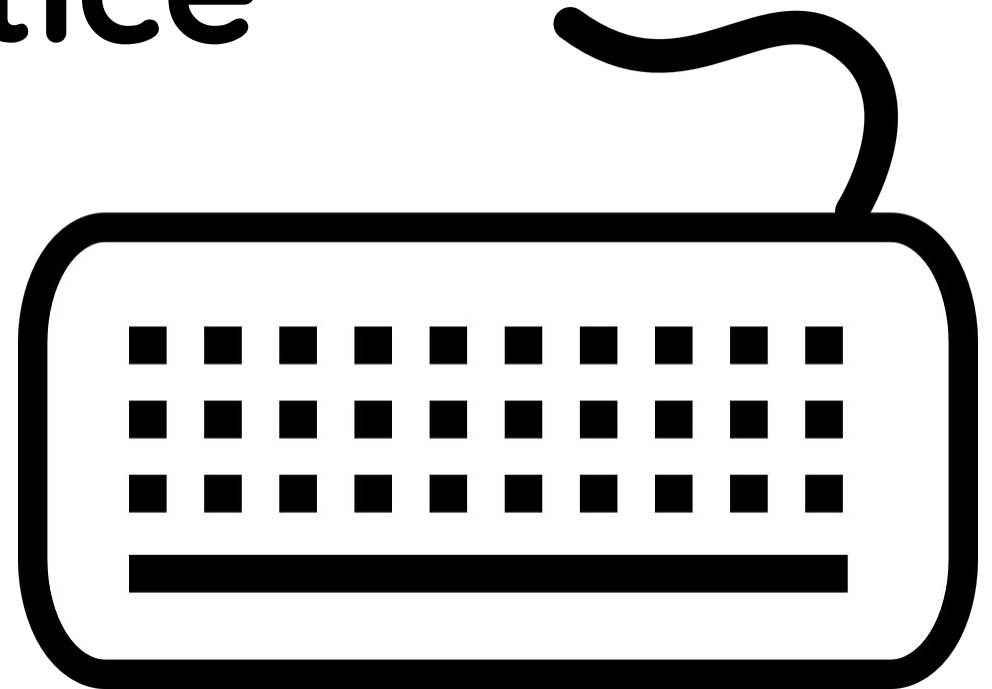
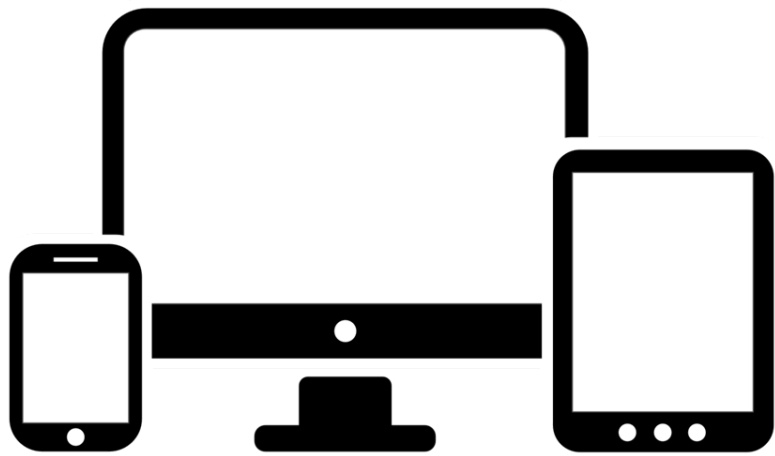


# Keyboard and Username Practice



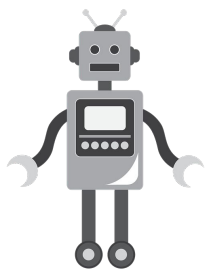
Created by Gabbi Young

Name

Username

Password

1	2	3	4	5	6	7	8	9	0
q	w	e	r	t	y	u	i	o	p
a	s	d	f	g	h	j	k	l	
z	x	c	v	b	n	m			

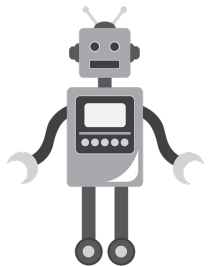


Name

Username

Password

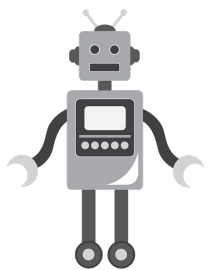
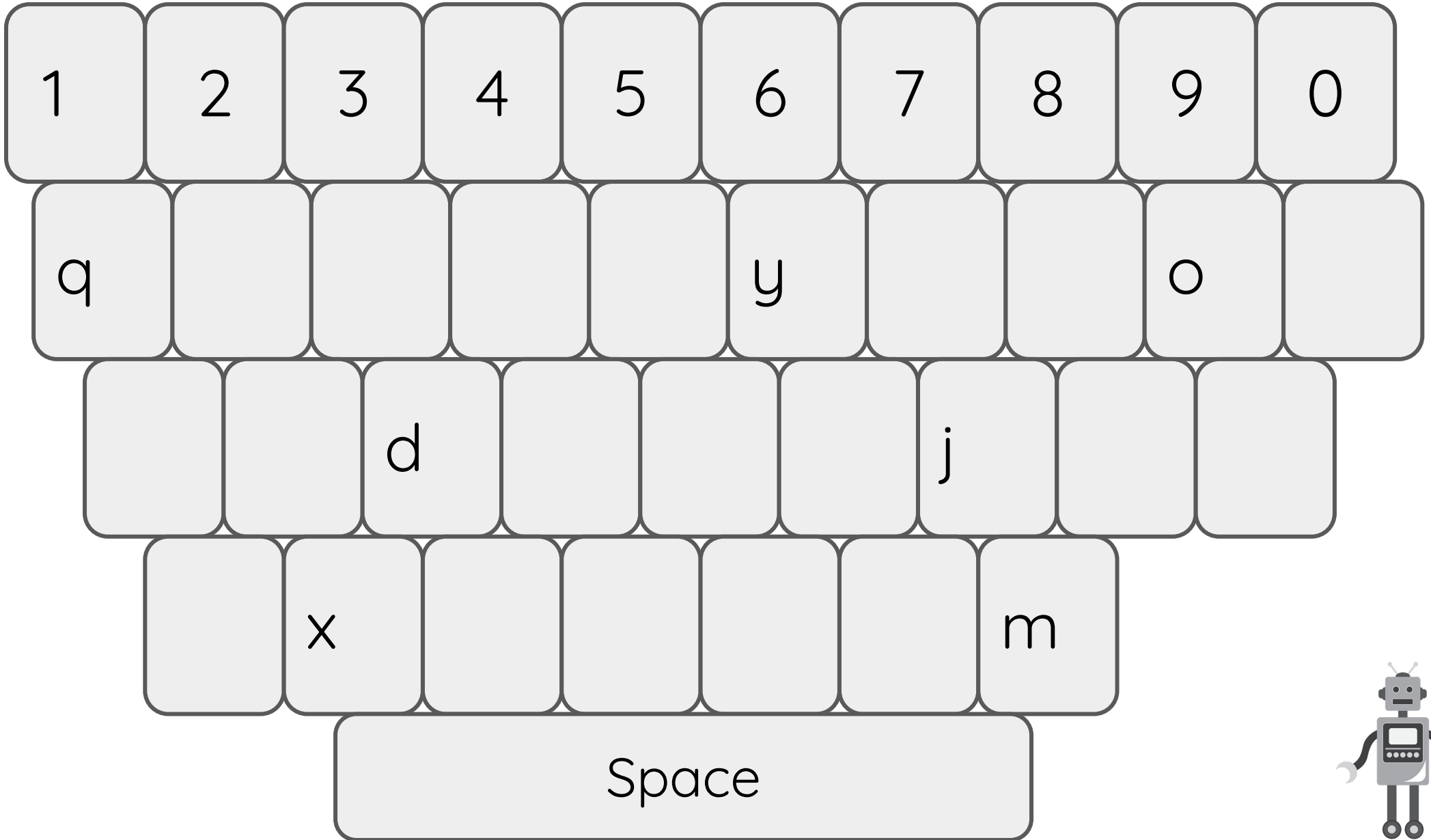
1	2	3	4	5	6	7	8	9	0
Space									

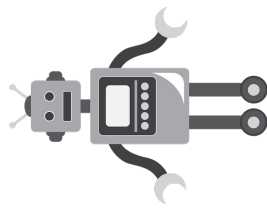
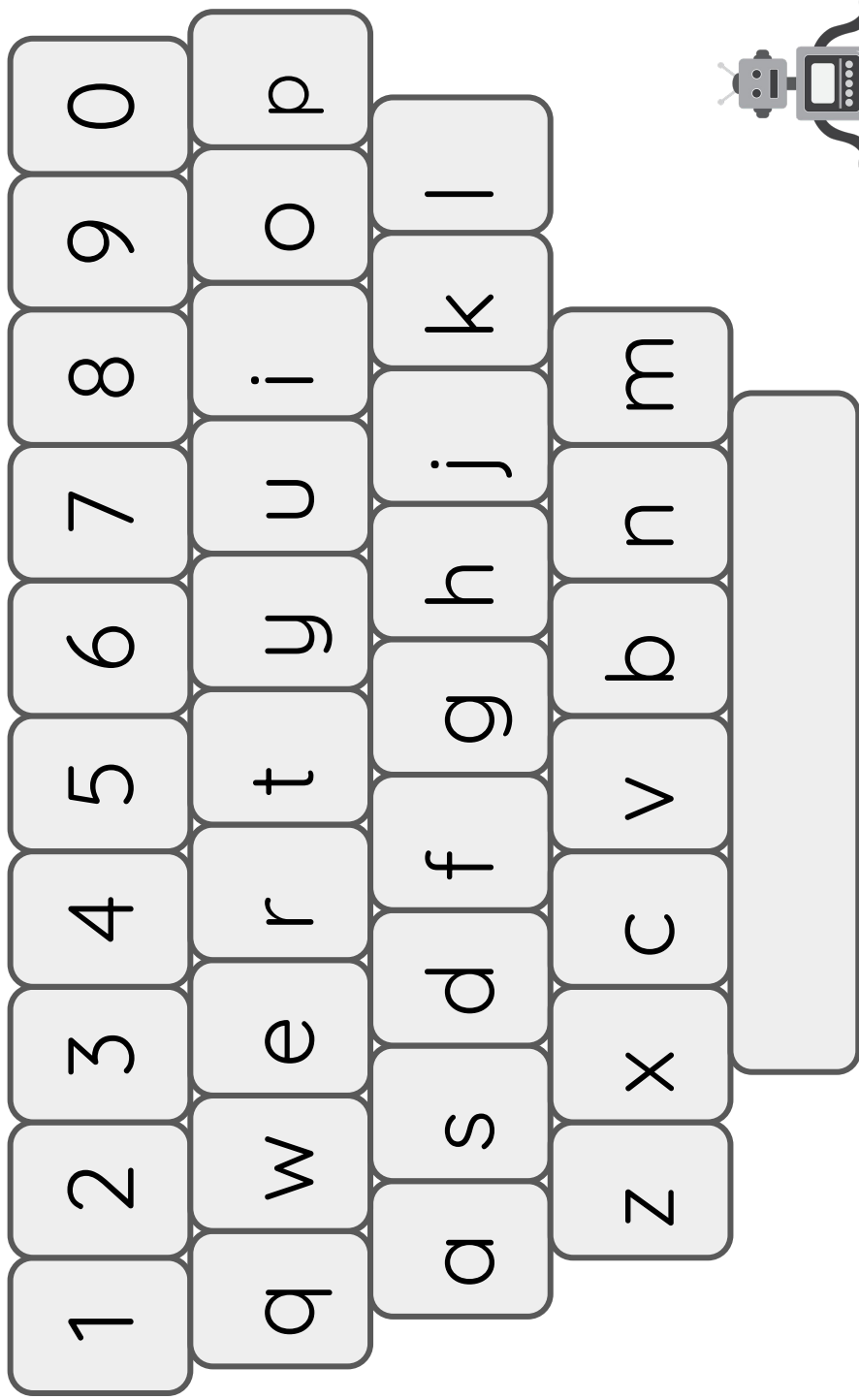
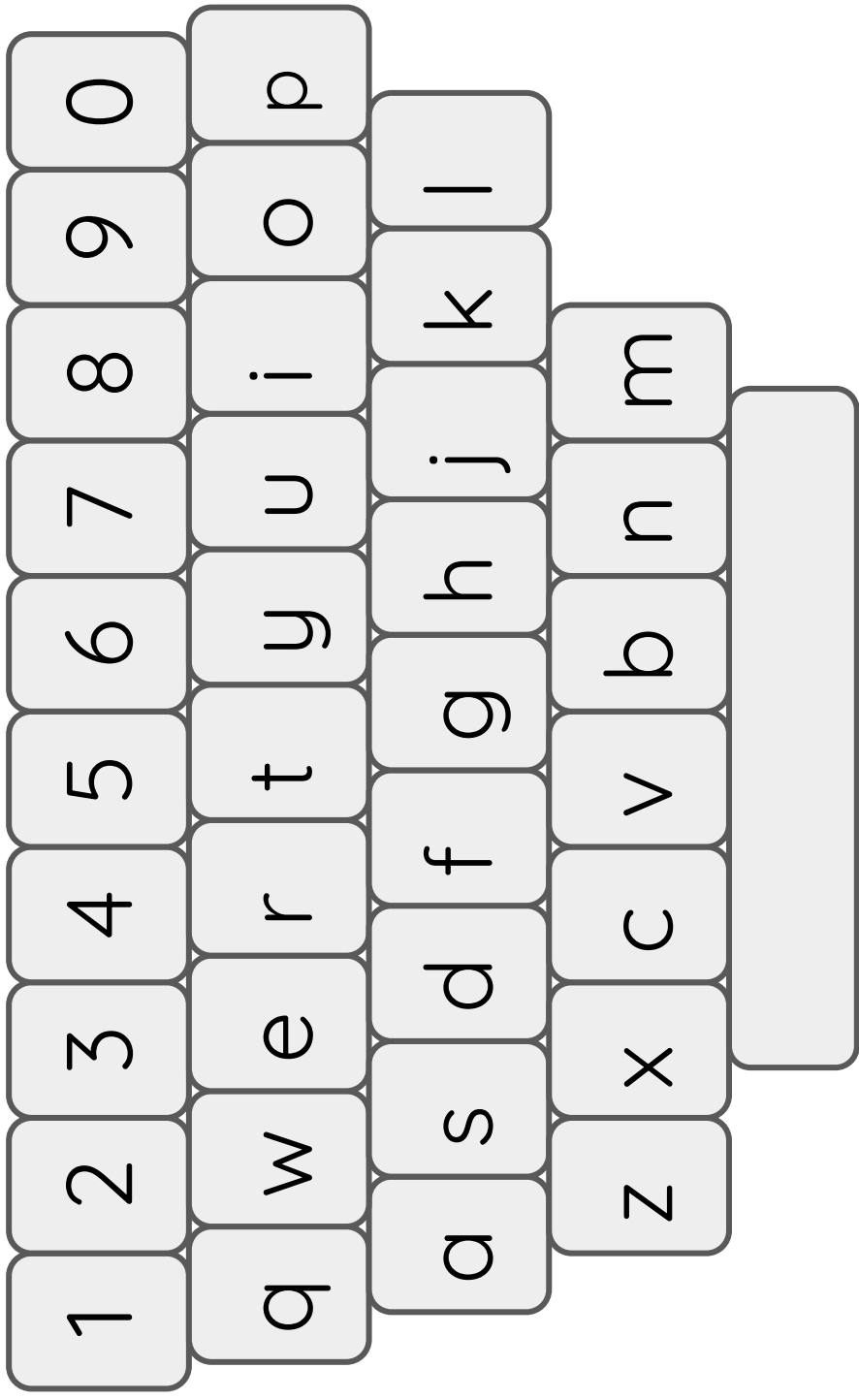


Name

Username

Password





# Suggested Day by Day Scope and Sequence

<b>Day 1</b>	Introduce Keyboard and find four letters
<b>Day 2</b>	Review Keyboard and find four more letters and point out different/oddball letters like q, a, u, t, g,y
<b>Day 3</b>	Finish identifying letters that are left
<b>Day 4</b>	Introduce Username, highlight username, and practice on the paper keyboard
<b>Day 5</b>	Introduce password, highlight password and practice on the paper keyboard
<b>Day 6</b>	How to use and where to find the backspace button
<b>Day 7</b>	Put in UN and click next and PW and click next
<b>Day 8</b>	Repeat Logout/sign out red button and keep practicing just logging in and logging out
<b>Day 9-10</b>	Repeat login practice
<b>Ideas for Alphabet Identification</b>	bingo, three in a row, two in a row, find the letters in order, use an ABC chart, black out letters and numbers they don't use in their US and PW

# Whole Group Suggestions

- Pass out page with all the letters on the keyboard
- Play alphabet chase with your class and have students mark an “X” on the letter you call out randomly. This will help them identify where the letters are at on the keyboard
- Then have the students use the blank keyboard to label the letters in the right spaces (This also helps with letter recognition and writing).
- Use a yellow crayon to highlight the keys that are in their username and/or password.

# Explicit Instructions

- What the "ENTER" button looks on student device
- What the "backspace" button looks like and how to use it.
- How to use the mouse/trackpad on their device  
Touchscreen vs. non touch screen
- **Vocabulary:** Cursor, mouse, keyboard, keys, username, password, laptop, chromebook, computer, ipad, touch screen, space, "Next" button, the "eyeball" icon that shows the letters/numbers for your password instead of encrypted dots
- Use the hand that they write with to move on the trackpad



# Things to Remember/ More Ideas

<p>There are other symbols/icons, but we don't need to worry about that right now. :)</p>	<p>Centers/bell work practice typing UN and PW on paper keyboards</p>
<p>Printing 2 keyboards per page could be helpful to identify students Username and Logins by highlighting the letters and numbers that are in their personal username/password</p>	<p>Be aware that the letters on most computer lab/desktops are uppercase and the chromebooks are lowercase.</p> <p>Computer lab- use uppercase chromebooks or ipads/lowercase</p>
<p>Create Student Username Cards: Put student name on the front, UN and PW on the back and don't put the "words" Username and password. This could confuse students in the beginning.</p>	<p>BE PATIENT, it takes time, have them keep the paper keyboard until it's mastered.</p>